

KANSAS
COMMERCE

**Leavenworth Business
Symposium**

Community Development Director Kayla Savage

October 17, 2022



**From the Kansas Economic Development
Community in January 2019:
“Fix Commerce.”**



Top Economic Development Priorities:

- No Plan for Growth Since 1986
- No Leads Coming from Commerce
- Little/No Communication

EXECUTIVE REPORT

**KANSAS ECONOMIC DEVELOPMENT STUDY:
FINDINGS, STRATEGY AND RECOMMENDATIONS**

prepared by the

Institute for Public Policy and Business Research
The University of Kansas

in consultation with

Wichita State University (Center for Business Research)
Midwest Research Institute, Kansas City
ASLAN, Washington, D.C.
Counsel for Community Development, Boston

June 1986

Study Director: Dr. Anthony Redwood
Professor of Business and
Executive Director,
Institute for Public Policy and Business Research

Study Coordinator: Dr. Charles Krider
Professor of Business and
Director of Business Research,
Institute for Public Policy and Business Research

Report No. 108





Rebuilt Our **Sales Force:**

- Added Recruiters to Key Markets
- Restored the International Division
- Restructured In-State Business Development Team



Park Aerospace Plans \$19M Expansion in Newton, Kansas

DEC 17, 2018
Topeka, KAN – Park Aerospace Technologies Corp. announced today that it will be undergoing a massive expansion in Kansas. At a special joint meeting Monday, the Newton City Commission and Harvey County Commission approved a development agreement with Park for a \$19 million expansion. The expansion will allow Park to double...

[READ MORE >](#)



Kansas Department of Commerce Announces the National Career Development Poetry & Art Contest

DEC 6, 2018
The Kansas Department of Commerce is partnering with the National Career Development Association (NCDA) to participate in the 53rd NCDA Annual Poetry and Art Contest. The contest theme is "Using Careers to Break Barriers, Empower Lives & Achieve Equity." The National Career Development Association promotes career development through its annual...

[READ MORE >](#)



Collaboration Drives Company Growth at Fagron Sterile Services/JCB Laboratories

NOV 27, 2018
WICHITA, KS (November 27, 2018) – Fagron Sterile Services/JCB Laboratories (FSS/JCB), a leading FDA Registered 503B Outsourcing Facility and a national supplier of compounded sterile preparations, announced plans to expand the company in collaboration with the visionary leadership of the Kansas Department of Commerce. This collaboration will bring new jobs...

[READ MORE >](#)



Department of Commerce Accepting Nominations for 2019 Governor's Exporter of the Year Award

NOV 6, 2018
Kansas businesses are a global force, with goods and services being sought from Kansas internationally. The annual Kansas Governor's Exporter of the Year Award proudly celebrates the outstanding Kansas companies that excel in exporting and building relationships with companies around the world. We encourage you to nominate a successful Kansas...

[READ MORE >](#)



Kansas Opportunity Zone Forum Taking Place on Oct. 25

OCT 16, 2018
TOPICKA – The Kansas Department of Commerce will host a community forum for Opportunity Zones from 1:30 to 5:00 p.m. on Thursday, October 25th, at the Kansas Star Casino in Mulvane, Kansas. Opportunity Zones are part of a federally-led tax incentive program intended to localize private investment in economically distressed...

[READ MORE >](#)



Governor Colyer visited Exporter of Year Winner Sher-Line on Oct. 15

OCT 15, 2018
Governor Jeff Colyer, M.D., toured the Kansas City, Kansas headquarters of Schroe Manufacturing Company ("Sher-Line") on October 15th. Sher-Line is the winner of the 2018 Kansas Governor's Exporter of the Year Award, which is presented to a single Kansas business each year for excellence in international trade and marketing. Following...

[READ MORE >](#)

THE STATE OF UNEXPECTED



Megan Myungwon Lee
Chairwoman and CEO
Panasonic ENERGY
Powering Electric Vehicles for a Cleaner Tomorrow

Improved Communication: Focusing on What We Do and Why

But We Didn't Stop There...

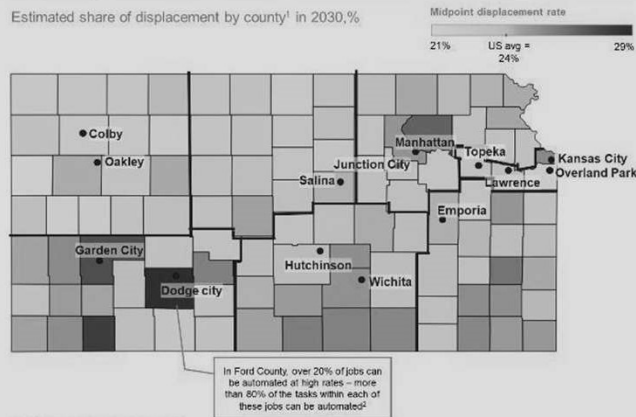
- **Workforce Development is Central**
- **Community Development Revitalized**
- **Rural Prosperity Prioritized**
- **Supported Key Infrastructure**
- **Reengaged in Innovation**
- **Realigned with Kansas Tourism**
- **Faced Pandemic Challenges Head-On**



Kansas is estimated to experience 22% displacement from automation, with some geographies and occupations hit harder than others

Midpoint displacement rate¹ for Kansas

Estimated share of displacement by county¹ in 2030, %



Jobs lost by occupation in Kansas – midpoint adoption scenario, (2017-30, K)

Occupation	Displacement Rate
Secretaries and administrative assistants	10
Retail salespersons	10
Stock clerks and order fillers	9
Bookkeeping, accounting, and auditing clerks	9
Cashiers	9
Aircraft structure, surfaces, rigging, and systems assemblers	8
Office clerks, general	7
Combined food preparation and serving workers	7
Farmers, ranchers, and other agricultural managers	6
Waiters and waitresses	6



¹ Total jobs lost divided by total jobs 2030
² Jobs with the highest expected full-time employee impact in Ford County, KS include: Meat, poultry and fish trimmers; Slaughterers and meatpackers; Helpers – production workers; Heavy & tractor-trailer truck drivers; and Packaging and operators
 SOURCE: McKinsey Global Institute, "The future of work in America: People and places, today and tomorrow," July 2019

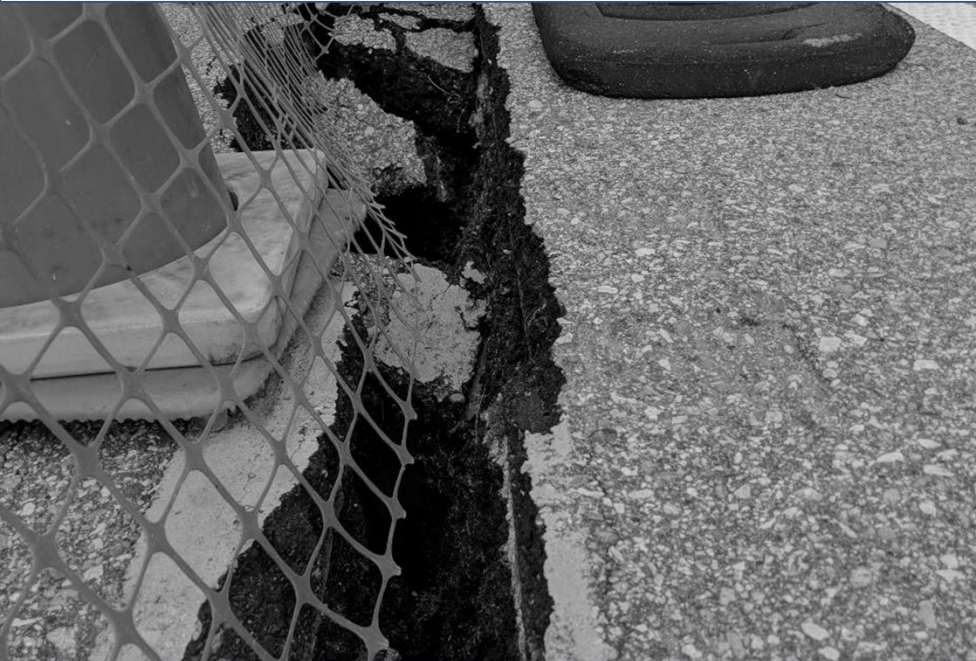
Workforce Development: Central to Our Success



Community Development: Quality of Life Prioritized, Key Programs Returned



Rural Prosperity: Made a Focus, with Resources Included



KANSAS
OFFICE OF
BROADBAND
DEVELOPMENT

*The CPF Program is intended to enable broadband infrastructure deployment to facilitate work, education and healthcare in areas of critical need that lack access to internet speeds of 100/20 Mbps.
#ConnectingAllKansans*

Capital Projects Fund



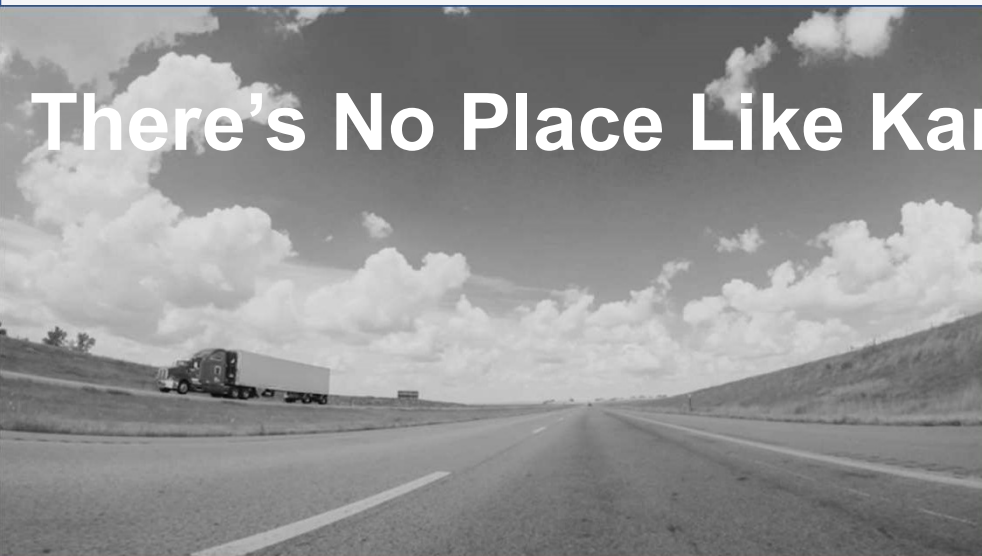
Supported Key Infrastructure: Office of Broadband Development, Building A Stronger Economy (BASE)



Housing Development: **SHOVL Program and RHID Expansion**



Elevating Innovation: Launched Office of Innovation

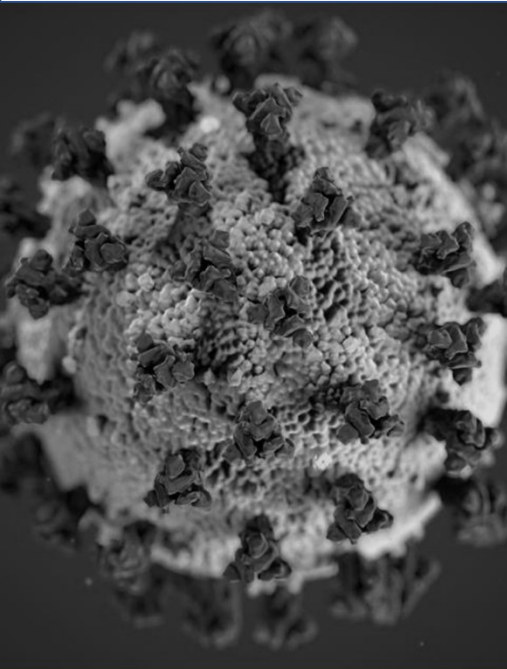


There's No Place Like Kan



*to the
stars*

Kansas Tourism: **Re-Aligned with Economic Development**

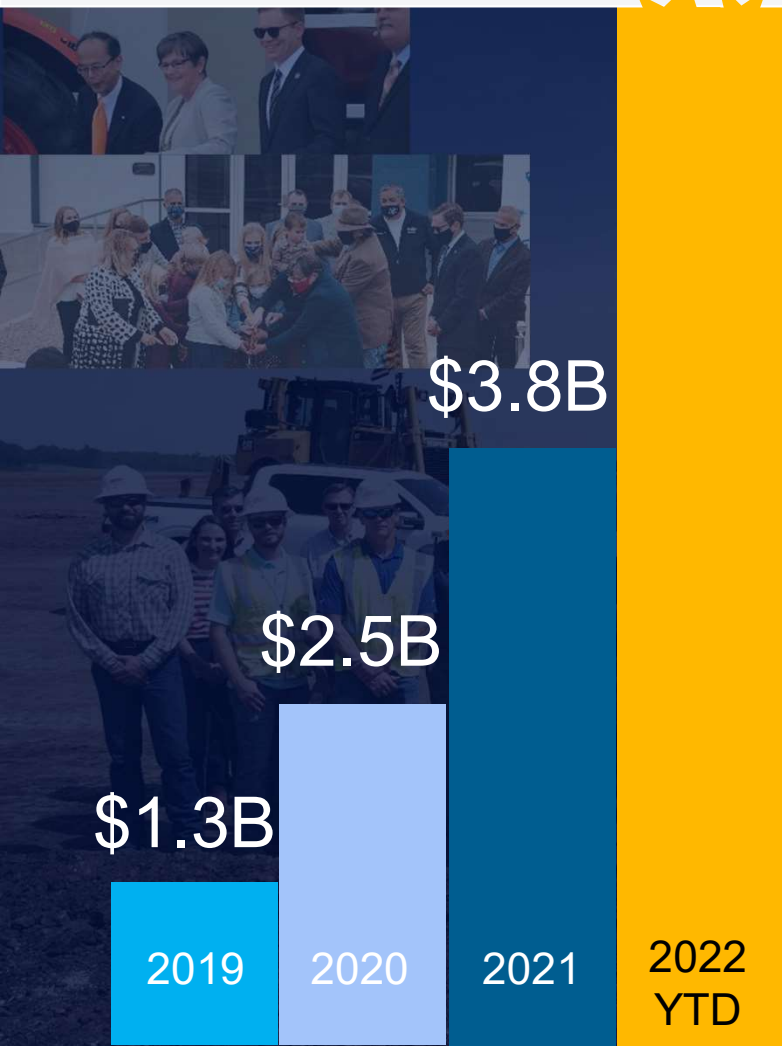


Facing Challenges Head-On: Delivered Key Support To Businesses



What Has All This Yielded **for** **Kansas?**

\$6.9B



The Framework is Working

Projects
766

New and Retained Jobs
52,320

Since 2019



Leavenworth Economic Wins

Projects

14

New Jobs

199

Retained Jobs

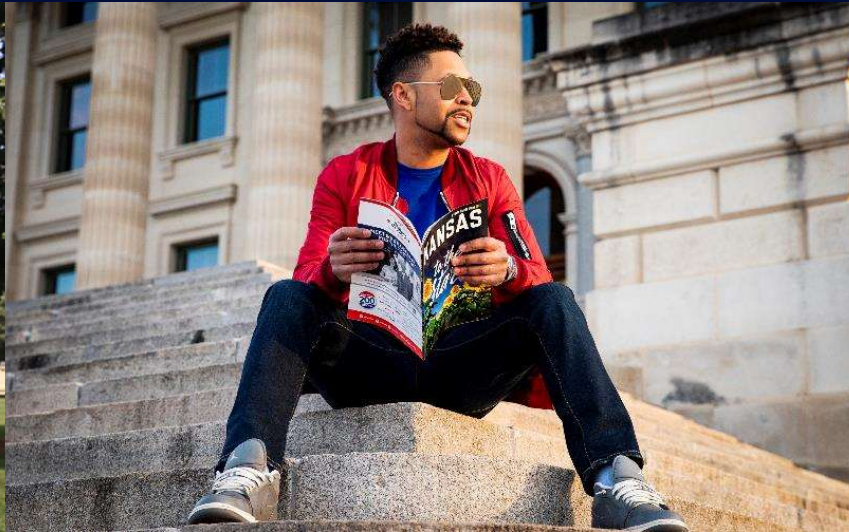
111

Capital Investment

\$502,116,900

Another Record-Breaking Year In the Works







Support for Small Business: **Creation of GrowKS**



Let's Talk.

Community Development Director, Kayla Savage