



Grants, Loans, and Expertise for Starting or Growing Your Business

- Penny Holler, Leavenworth Assistant City Manager
- Lisa Weakley, Chair, Grow Leavenworth County Development Corporation (GLC)

Good News

- Anchor Employers = Stability
- Good School Systems
- Access to University/College Programs
- Full Spectrum Workforce (High School Graduates to 1st and 2nd Time Retirees)
- Economic Momentum

City Economic Development Department

- Leavenworth City Hall (Downtown)
- In-Person Meetings, Virtual Meetings, or Phone Calls
- Economic Development Incentives
- Referrals to Partner Resources (Including Those Here Today)
- Connections with Other City Departments (Planning, Fire Department, PW Building Inspections)
- City Projects or Plans



Penny Holler
Assistant City Manager
100 N. 5th Street
Leavenworth, KS 66048
(913) 680-2602
Penny.Holler@FirstCity.org
www.LeavenworthKS.org/ED

Identify What You Need

- Find the Next Step



Existing Business

- Updating, Expanding, or Moving
- Small Business Economic Development Grant (\$5,000 single business)
- Eligible Improvements
- Two Quotes for Work
- Other Permits/Approvals May Apply



New Business

- Grow Leavenworth County Development Corporation (GLC)
- Local Non-Profit Pulls Down State Loans
- Cities of Leavenworth and Lansing Participate
- Need Matching Funds (Usually Private Loan)
- Up to \$45,000
- Potential for a Portion to Become a Grant (Patterson Family Grant)



Grow Leavenworth County (GLC)

- Lisa Weakley – Mayoral Appointee and Chair of Grow Leavenworth County



ADA Access

- ADA Accessible Grant
- Front Door Business Access
- Up to \$2,500 or 25% of the Cost
- Concrete Ramp and Handrail
- Submit Letter of Participation
- Requires Contractor's Quote

ADA Webpage for Businesses



ECONOMIC DEVELOPMENT

OPPORTUNITY ZONE
STARTING A BUSINESS IN LEAVENWORTH
SMALL BUSINESS GRANT PROGRAM
GROW LEAVENWORTH COUNTY DEVELOPMENT CORPORATION (AN E-COMMUNITY)
SHERMAN ARMY AIRFIELD
CITY OF LEAVENWORTH ECONOMIC DEVELOPMENT INCENTIVE POLICY
ACCESSIBILITY RESOURCES FOR BUSINESSES

Accessibility resources for businesses

Title III of the Americans with Disabilities Act (ADA) is the portion of federal law that governs non-discrimination on the basis of disability in public accommodations and commercial facilities including restaurants and bars, shops, and hotels. The law is enforced by the U.S. Department of Justice. The City of Leavenworth supports local business accessibility improvements through:



- Providing resources to assist with better understanding ADA requirements
- Funding the ADA accessibility grant program (ramps and handrails)
- Reviewing ADA standards during the permit process for renovations

Frequently Asked Questions

Is there a "grandfather clause" for historic buildings to avoid making ADA improvements?

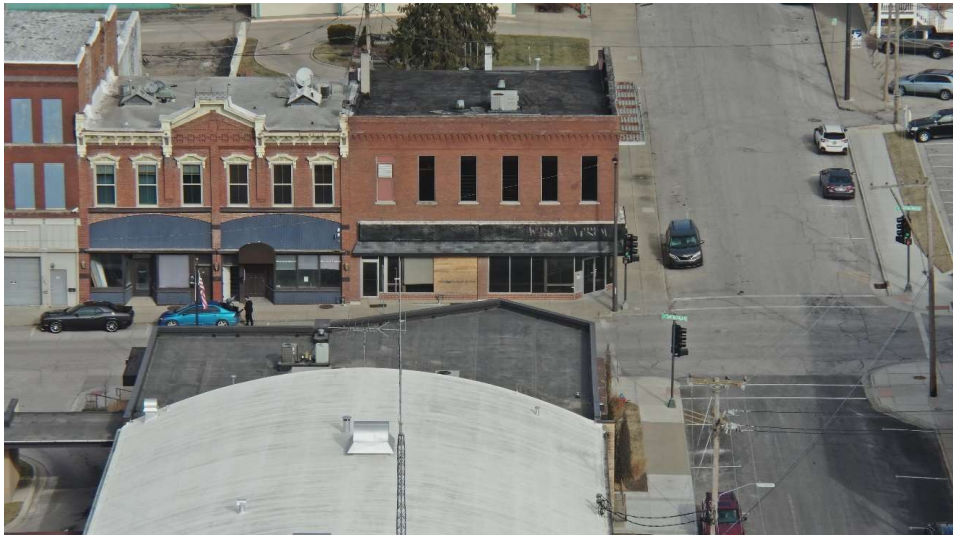
There is no state or city clause that excludes specific buildings from making ADA improvements. However, the Department of Justice requires ADA accessibility improvements that are "readily achievable." Those improvements may look different than the requirements for newly constructed buildings. The DOJ also considers the cost of ADA improvements in comparison to the overall project cost. The U.S. Small Business Administration (SBA) and DOJ provide this guide for businesses: <https://www.ada.gov/reachingout/smbusgd.pdf>

Are there tax benefits for making ADA accessibility improvements?

The State of Kansas provides the Disabled Access Credit for business taxpayers (Schedule K-37). For 2021, the credit was 50% of actual expenditures, up to \$10,000. The Kansas Department of Revenue's website provides further details:

New Building or Substantial Improvements

- Neighborhood Revitalization Area (NRA)
- Property Tax Rebate Program
- Be on the Map, Make Substantial Improvements
- Based on Increased Appraisal Value
- Includes Residential



Relocation and Job Creation

- City's Economic Development Policy
- Industrial Revenue Bonds
- Tax Increment Financing (TIF)
- Community Improvement District (CID)



Other City/Eco Devo Information

- LOIS/LocationOne (LCDC)
- Traffic Counts
- GIS Layers (Flood Plain, Zoning)
- Upcoming City Projects
- New Businesses

Monitor State/Federal Action

- Kansas SPARK Process (Federal ARPA Funds)
- Retail Storefront Property Tax Relief Act (up to \$5,000)

Questions?

