

**CITY OF LEAVENWORTH
BUSINESS SYMPOSIUM
CITY UPDATE**

Paul Kramer - October 17, 2022

TOPICS OF DISCUSSION

Infrastructure and grants

Recreation and amenities

Economic Development

Refuse and wastewater

Your questions

ROAD WORK GOING ON NOW

- Garland Street - dead end to Rees Street
- 7th Street - alley north of Dakota Street to Metropolitan Avenue
- Johnson Street - Fifth Street to Fourth Street
- 5th Street - downtown bridge near Oak Street to Shawnee Street
- Cherokee Street - Broadway Street to Fourth Street
- Leavenworth Library Parking Lot Improvements.





BRINGING FUNDING TO LEAVENWORTH

2023

- \$1 million (plus up to \$2 million in City funding)
- Fourth Street, Choctaw to Seneca

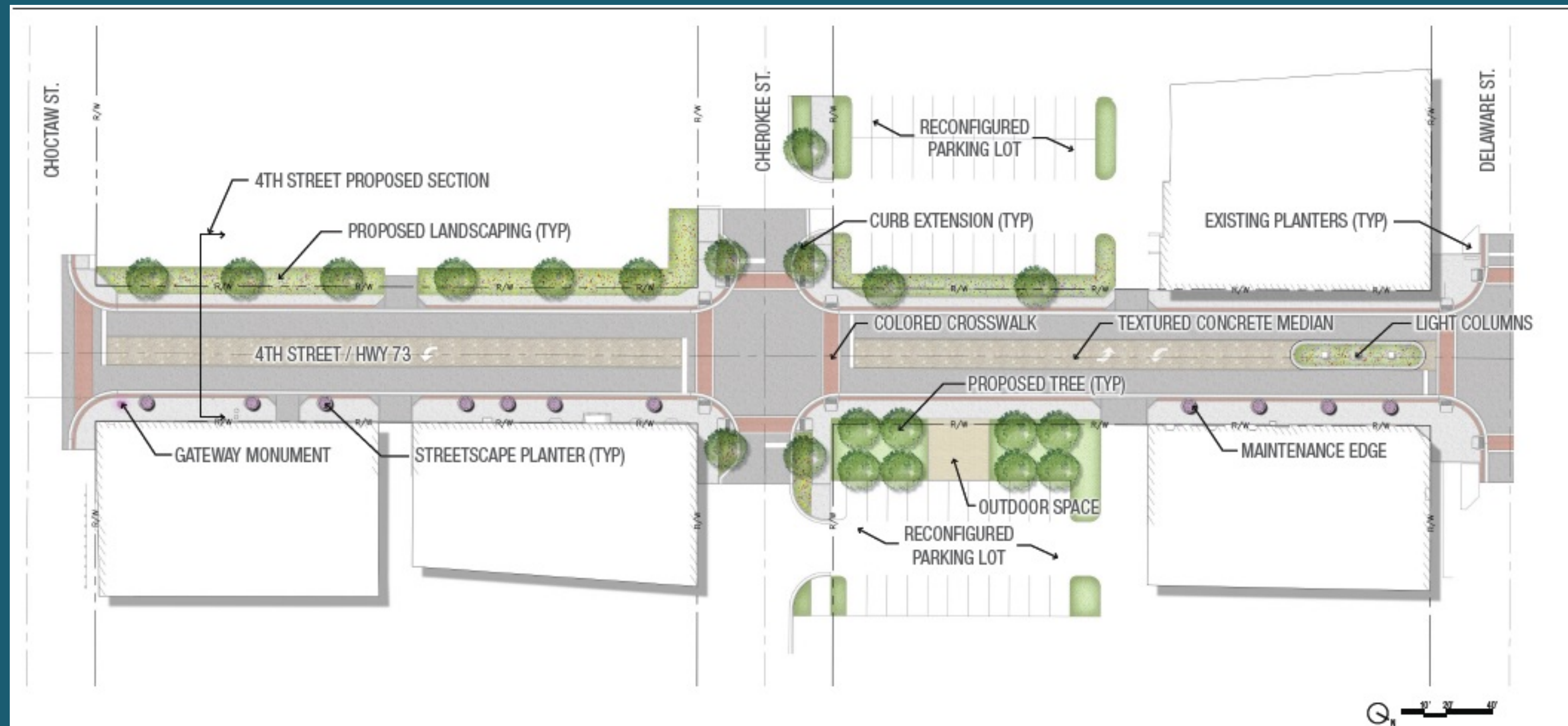
2024

- \$1.267 million (plus \$318k in City funding)
- Vilas 10th to 20th sidewalks and 13 ADA-compliant ramp upgrades
- Vilas 20th to 22nd roadway improvement project

2025

- \$1 million (plus \$250k in City funding)
 - Reconfigure and upgrade intersection of 10th and Limit
-

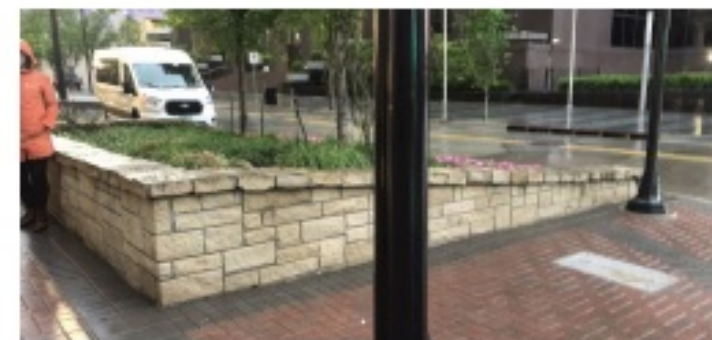
FOURTH STREET PROJECT - 2023



OUTDOOR SPACE EXAMPLES:



STREETSCAPE PLANTER:



4TH STREET PROPOSED SECTION:



OUTDOOR SPACE EXAMPLES:



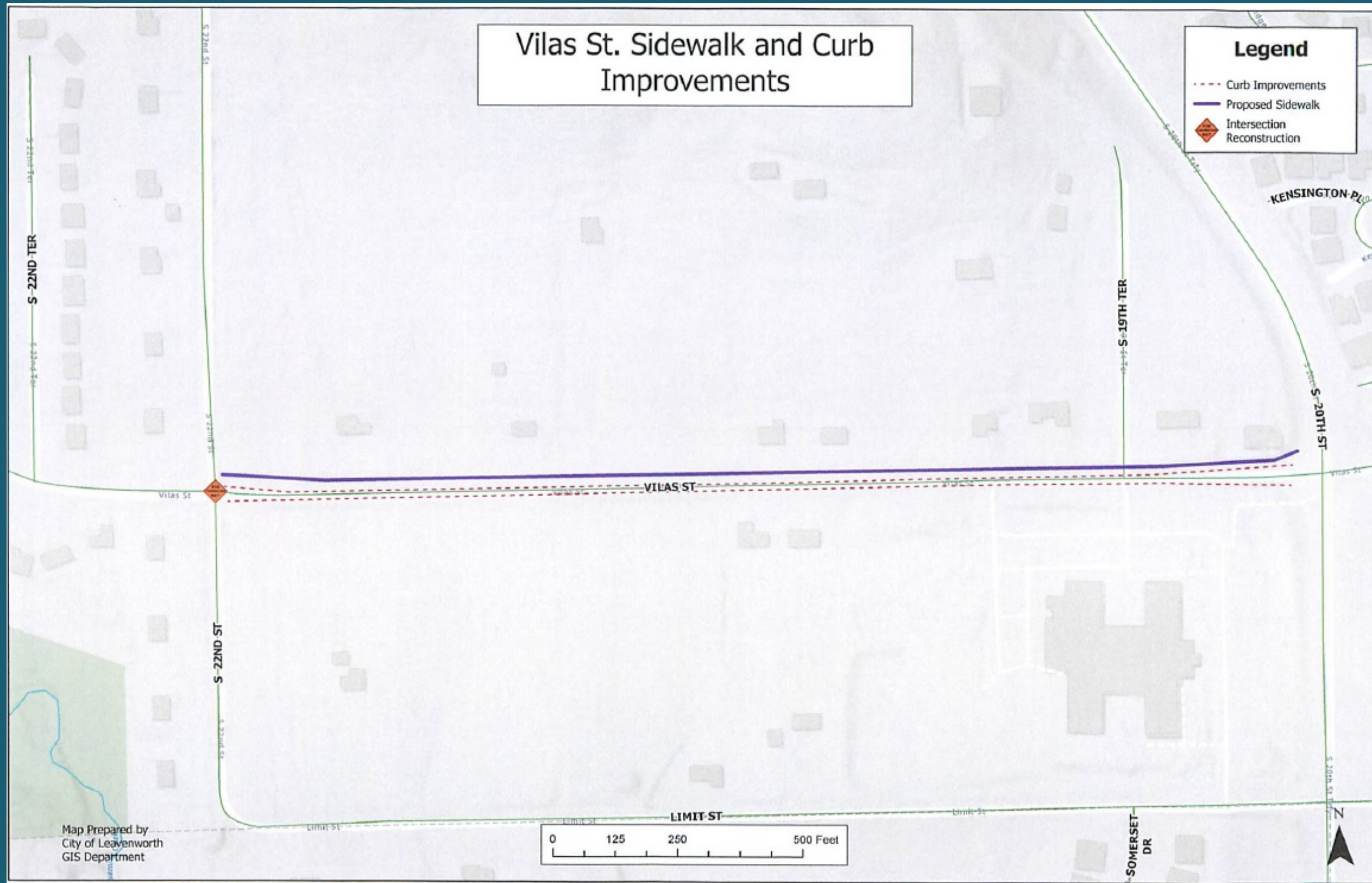
LIGHT COLUMNS:



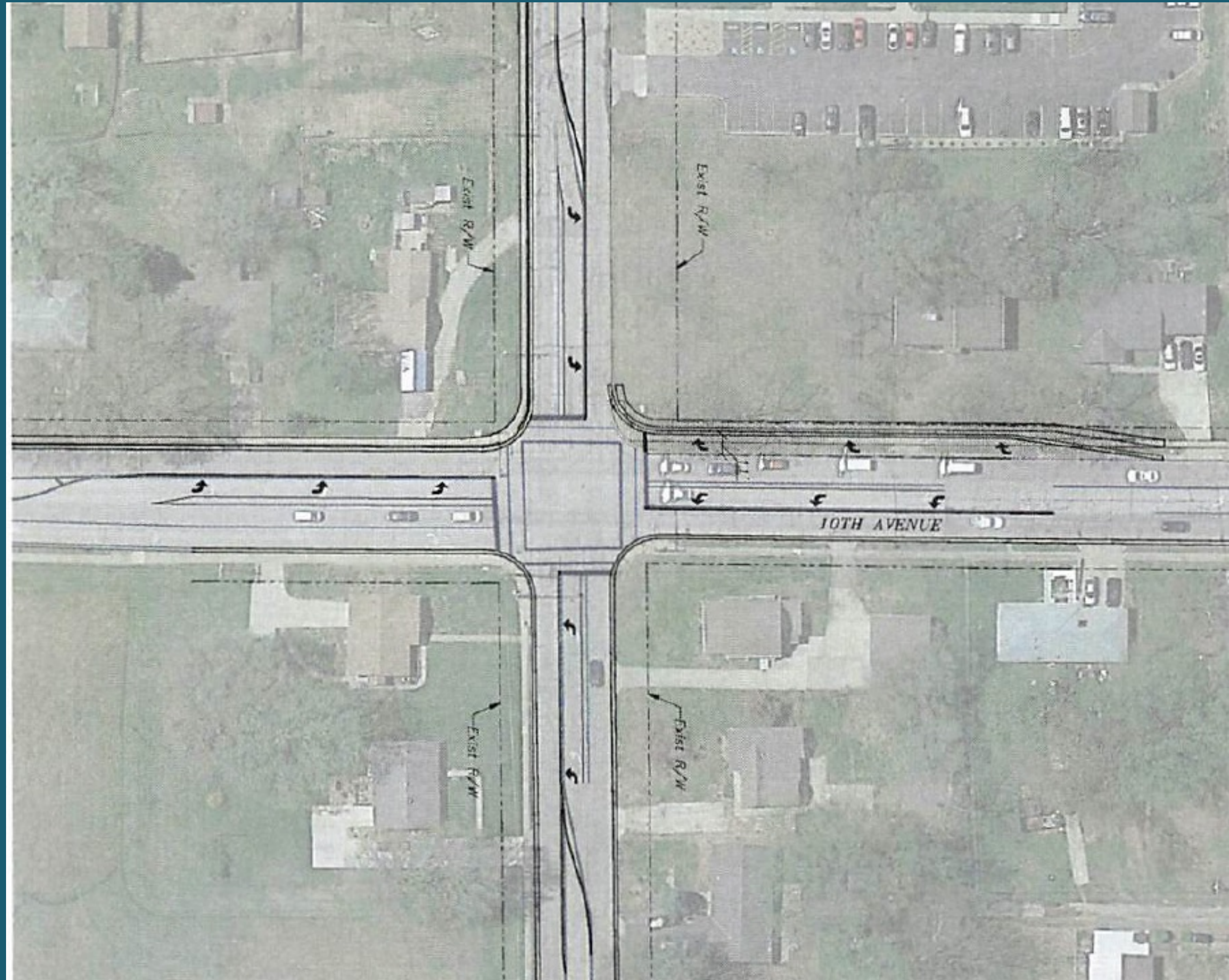
VILAS UPGRADES - 10TH TO 20TH - 2024



VILAS UPGRADES 20TH TO 22ND - 2024



10TH AND LIMIT PROJECT - 2025



RECREATION AMENITIES: HAVENS PARK



RECREATION AMENITIES: STUBBY PARK



RECREATION AMENITIES: SPLASH PARK



ECONOMIC DEVELOPMENT

- **BUSINESS AND TECHNOLOGY PARK**
 - **PROJECTS ARCH, SINGULARITY, SLAT**
 - **GRANT PROGRAMS**
 - **GENERAL BUSINESS GRANTS**
 - **ADA GRANTS**
 - **SIDEWALK COST SHARE**
 - **AREA NORTH OF WALMART**
 - **DOWNTOWN PROJECTS**
 - **BREWERIES, HISTORIC DISTRICT BOUNDARIES**
-

TO POLY-CART OR NOT TO POLY-CART



EXECUTIVE SUMMARY

June 28, 2022

City of Leavenworth Solid Waste Citizens Task Force, henceforth referred to as the Task Force (TF), places these recommendations as public record.

ISSUE

The city currently places no limits on the volume of solid waste (refuse) placed at the curb. While the vast majority of households produce a typical amount of refuse, it is common, every day of the week in different areas of the community, to see the contents of entire households dumped at the curb. This creates a burden on the system for both staff and equipment as the city provided residential trash service was never designed to be the solution for the removal of extreme quantities of discarded items. The city created the TF to recommend a common-sense procedure to address this excessive amount of refuse.

RECOMMENDATIONS TO THE LEAVENWORTH CITY COMMISSION

After studying the solid waste collection systems in the City of Leavenworth, Kansas, the TF places the following recommendations before the City Commission:

1. The TF recommends a hybrid approach to refuse collection to include both poly-carts and plastic trash bags.
 - a. Place all refuse/yard waste in trash bags or a city-provided poly-cart, with no additional items except a "SHARP OBJECTS" container, if required, automobile tires (as allotted) and tied sticks as outlined below. The city will no longer pick up loose items with normal residential collection.
 - No loose items except tied bundles of sticks and branches (No more than 5 foot in length and no more than 60 pounds – maximum individual branch diameter of 1.5 inches)
 - Residents can use one cardboard box (not to exceed 1.5 cubic feet), to secure sharp items (glass, metal shavings, needles, etc.). Mark box with "SHARP OBJECTS." **Take** caution when exposing cardboard to rain. If rain is expected, do not place box by the curb, save for the next week, or call the Service Center
 - Process tires in the following manner. Call the Service Center for scheduled tire pickup. The city picks up no more than 5 tires at a time and no more than 10 tires a years. Residents can drop off tires at the Service Center on first free Saturdays.

STORMWATER PROJECTS





**RESIDENTIAL DEVELOPMENT POPULATION GROWTH
35,251 TO 37,351 - 6.6% (2022 - 37,771)**



WHAT I DIDN'T COVER

- CAMP LEAVENWORTH**
- CENTENNIAL BRIDGE**
- PUBLIC SAFETY**
- EMPLOYEE RECRUITMENT AND RETENTION**
- EXISTING BUSINESS PARK (MAPS INC., PROJECT HEAT)**
- 4TH AND EISENHOWER**
- ???**

Questions?
