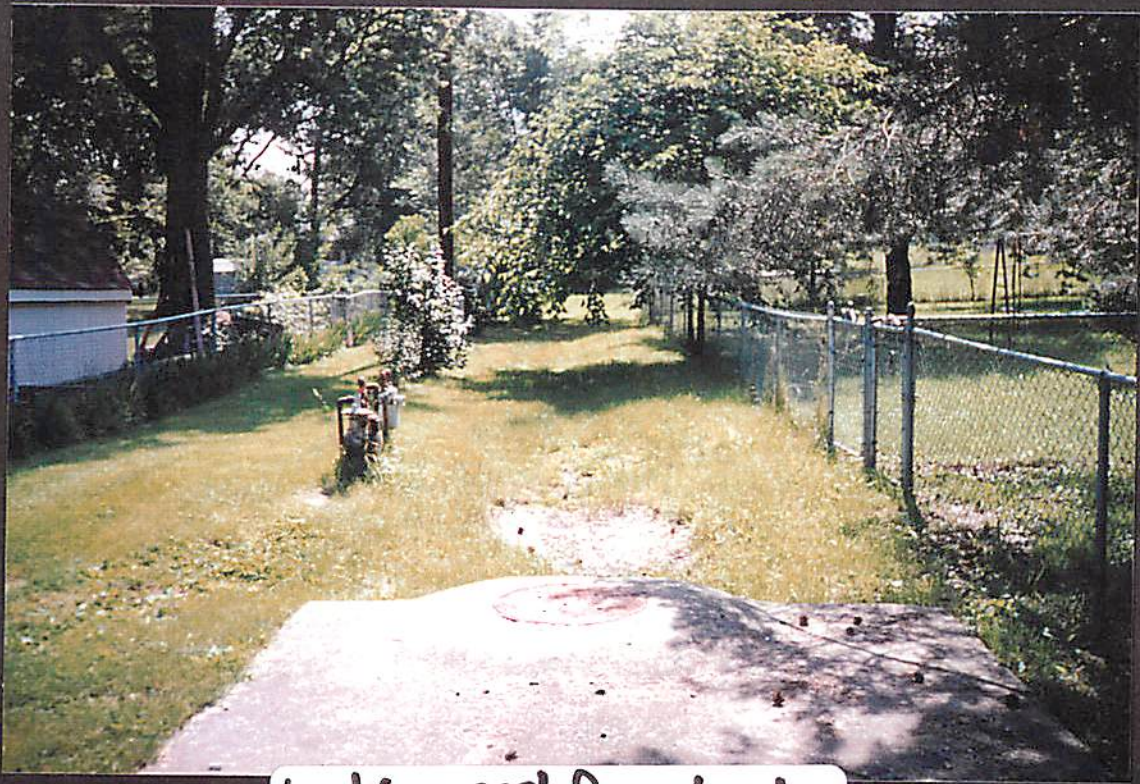
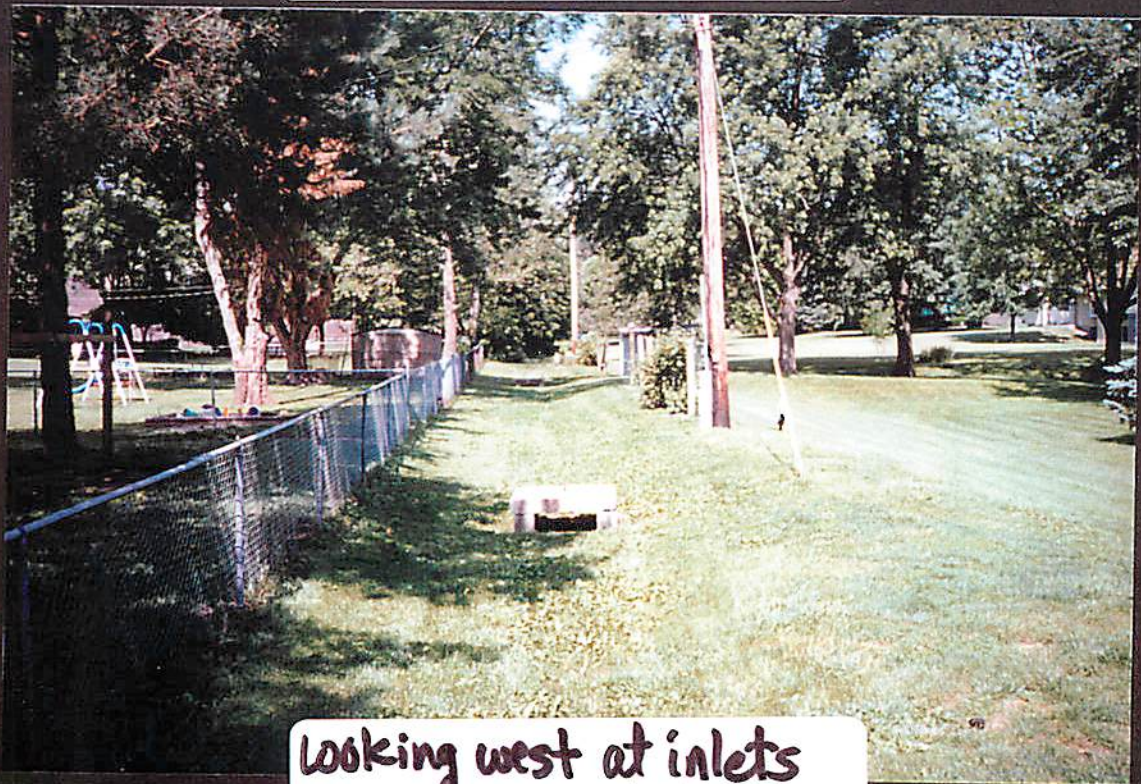


1815+1819 Osage St.
6/14/95

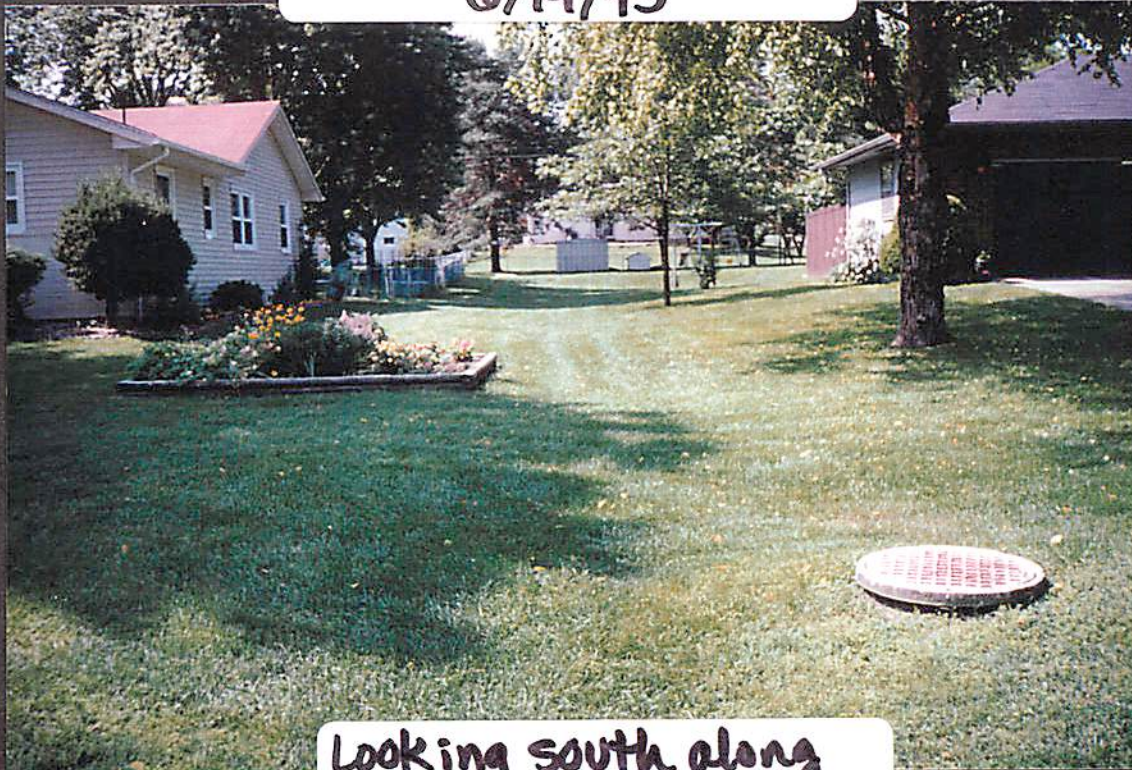


Looking east from back
of houses toward ups,
uphill drainage area

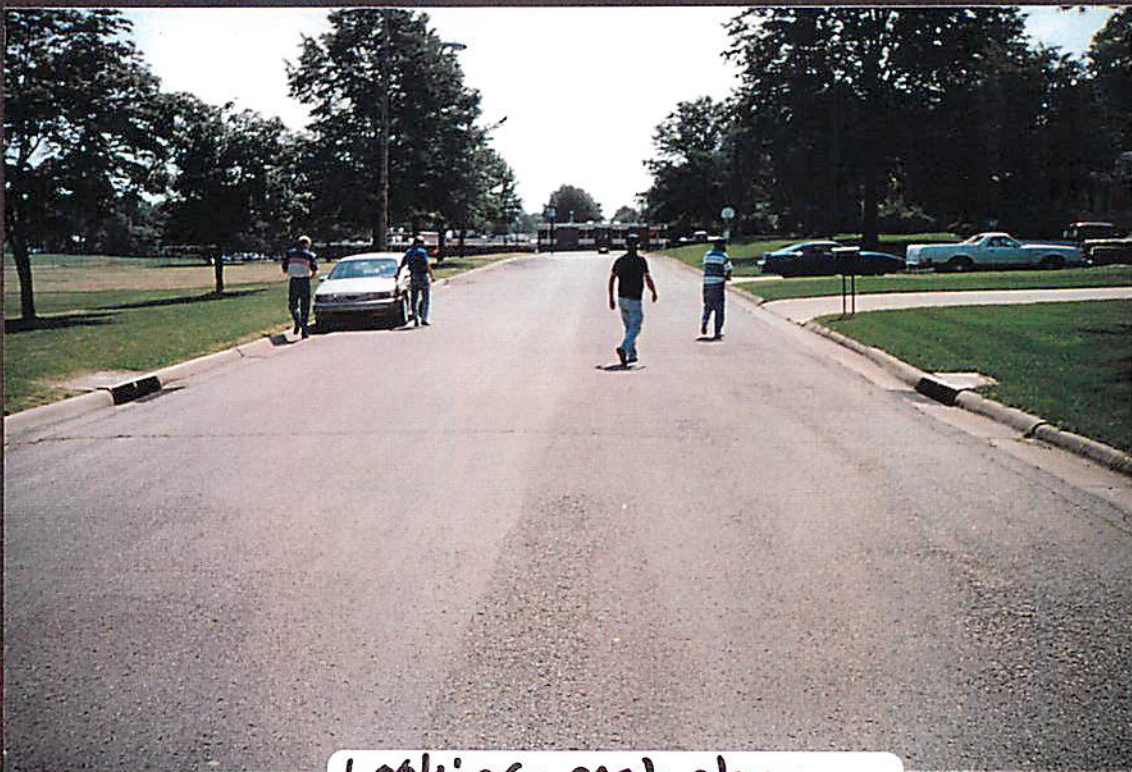


Looking west at inlets
from 90° bend of 54" RCP
behind houses

1815 & 1819 Osage St
6/14/95



Looking south along
54" RCP and overland
swale



Looking east along
Osage St at inlets to
junction at 1819 Osage



2400 Spring Garden Av.
6/14/95

Looking NW along Spring
Garden at d/s face
of stone arch culvert

Looking SW along Spring
Garden at erosion around
u/s side of culvert ↓





Looking at erosion around
U/s face of stone
arch culvert



Looking at lowered channel
U/s of stone arch culvert

10th Av + Wellington Dr
6/14/95



Looking south along 10th
U/s of Wellington culvert.
Creek can't make left turn
during flood + jumps to 10th



Looking north along 10th
@ U/s face of Wellington
culvert. Inlet control,
flow backs up + floods 10th.



Looking d/s along eroded
east bank of creek +
exposed PVC drainage tubes



Looking d/s from
d/s face of culvert →

WALLIS LN CULVERT
6/14/95

WALLIS LN CULVERT
6/14/95



Looking ups at eroded
toe on d/s face of
culvert



Looking at U/S face
of culvert constructed
out-of-round. Creek has
to turn left into culvert.

905 PARK AVE.

6/14/95

Looking north toward
house along backyard
drainage ditch from creek



905 PARK AVE.

6/14/95



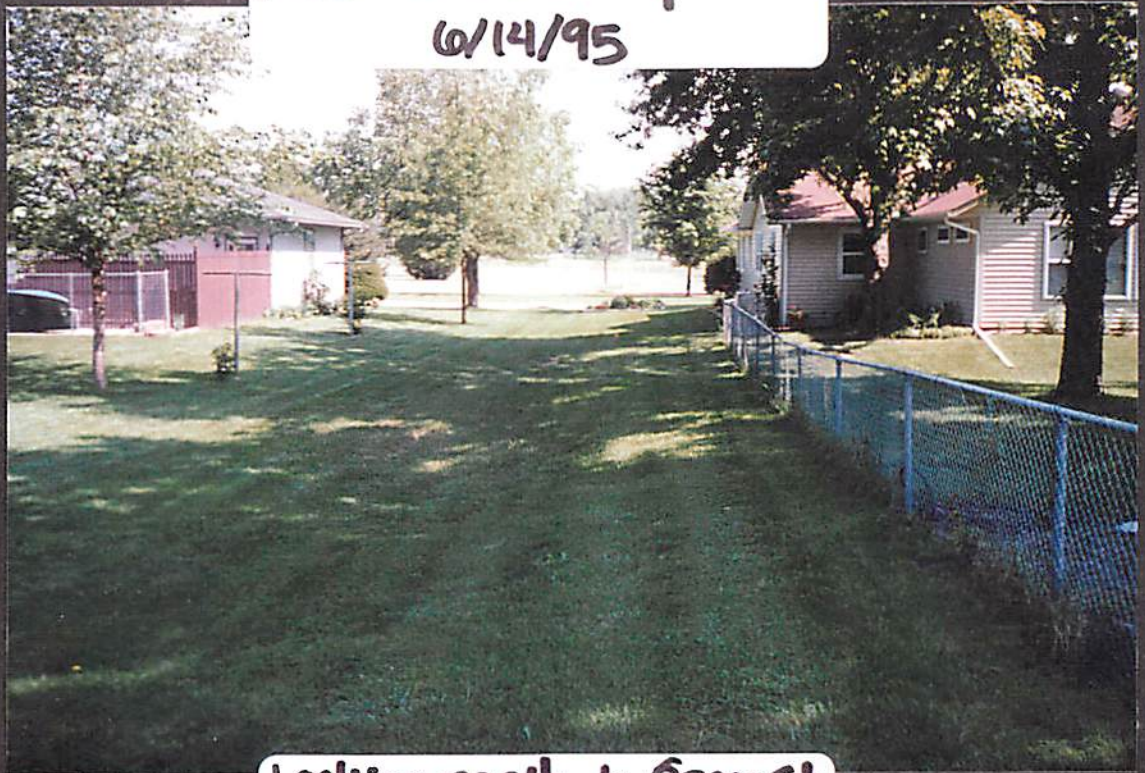
Looking along backyard
drainage ditch to outlet
to creek



Looking at U/S face of
CMP w/ creek entering, +
homeowner's backyard drain
DIPE FLAP GATE @ CREEK

1815+1819 Osage St.

6/14/95

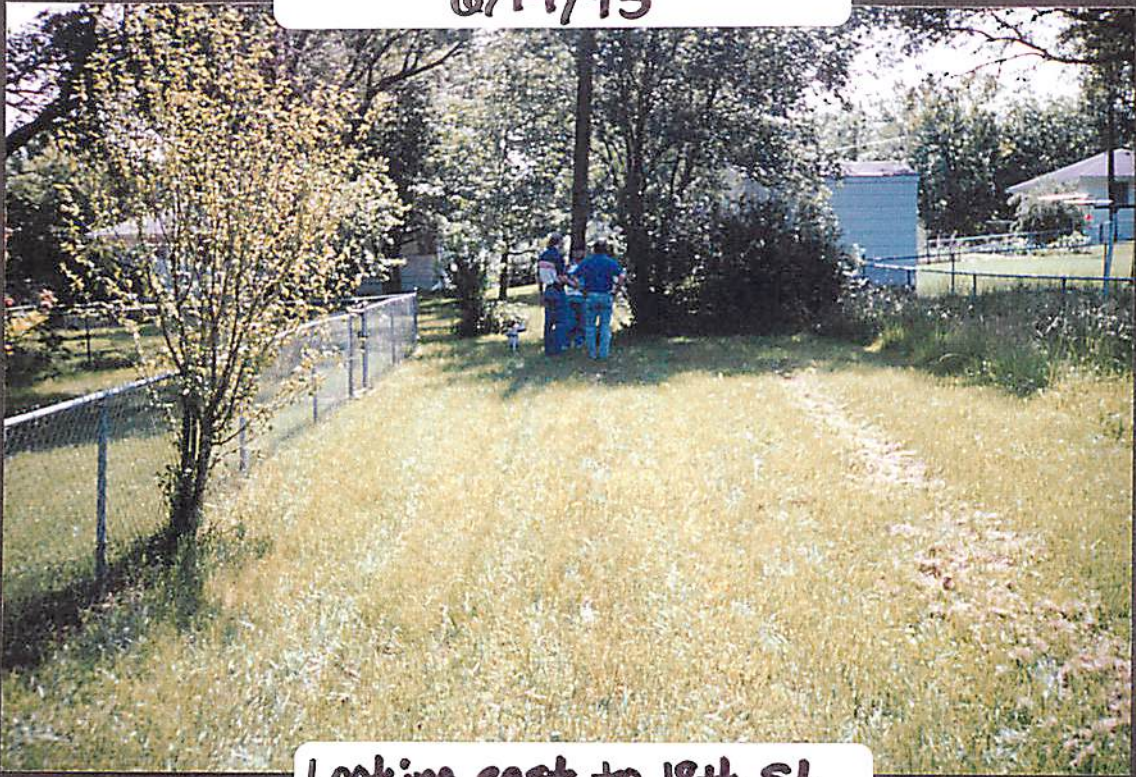


Looking north to Osage St
from back of houses
along 54" RCP

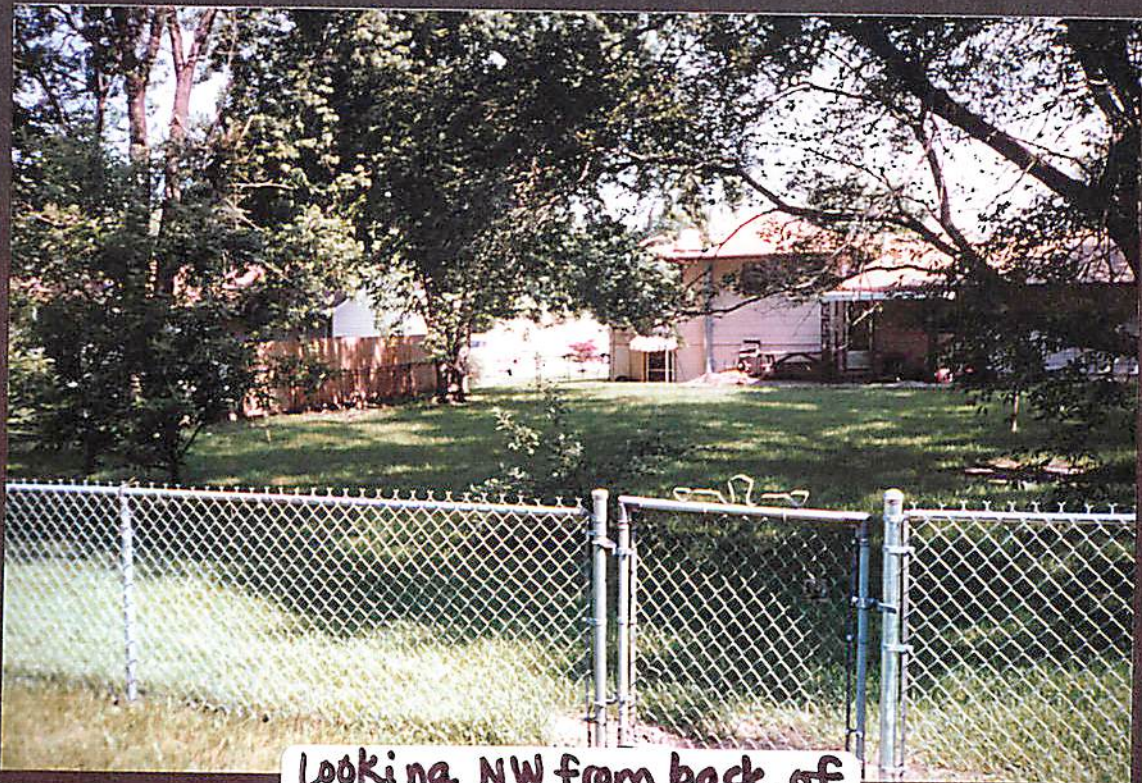


Looking west from back of
houses to inlets to
54" RCP at 90° bend

1815 + 1819 Osage St.
6/14/95



Looking east to 18th St
from 1815 Osage back of
house. No drainage course



Looking NW from back of
1815 + 1811 Osage along
flood path thru yards



Looking east along Santa Fe St. west of Garland. Drainage tubes only on S. side



Looking northeast from Santa Fe + Garland along ditch that deflects Creek around artificial berm

6/14/95



Looking west along Santa
Fe at drainage to creek
between Broadway Terr.
& Old Creek Court